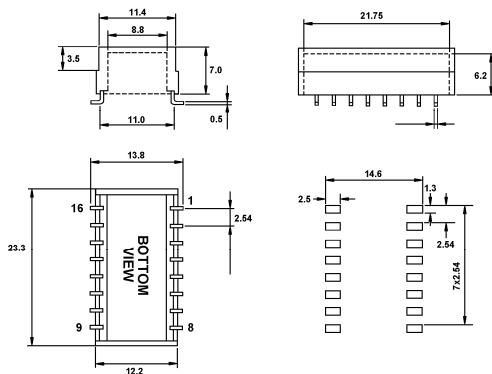


**ELECTRICAL SPECIFICATIONS @25°C**

PART NUMBER	Turns Ratio (Line: Chip) (±2%)	Line Side Inductance (mH min.)	Interwinding Capacitance (pF max)	Line Side Leakage Inductance (uH max)	DCR Line Side (Ω ±15%)	DCR Line Side (Ω ±15%)	Schematics
49TM-3031**A	1Split: 1Split	30	100	5	2.9	2.8	A
49TM-3032**B	1CT: 1CT	30	100	5	2.9	2.8	B
49TM-3033**A	1Split: 1Split	30	100	5	3.0	5.4	A
49TM-3034**B	1CT: 2CT	30	100	5	3.0	5.4	B
49TM-3035**A	1Split: 1Split	30	100	5	3.0	6.8	A
49TM-3036**B	1CT: 2.5CT	30	100	5	3.0	6.8	B

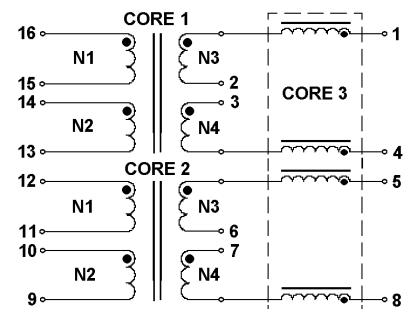
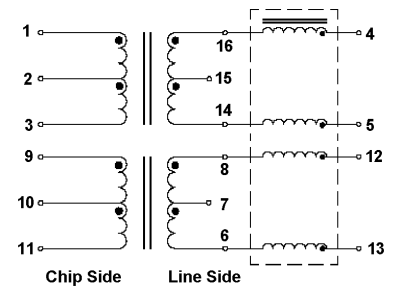
PART NUMBER	Common Mode Choke									
	-00		-51		-12		-52		-53	
	OCL (uH)	DCR (Ω max)	OCL (uH)	DCR (Ω max)	OCL (uH)	DCR (Ω max)	OCL (uH)	DCR (Ω max)	OCL (mH)	DCR (Ω max)
49TM-3031**A	None		50	0.4	100	0.6	500	1.4	5.0	2.0
49TM-3032**B	None		50	0.4	100	0.6	500	1.4	5.0	2.0
49TM-3033**A	None		50	0.4	100	0.6	500	1.4	5.0	2.0
49TM-3034**B	None		50	0.4	100	0.6	500	1.4	5.0	2.0
49TM-3035**A	None		50	0.4	100	0.6	500	1.4	5.0	2.0
49TM-3036**B	None		50	0.4	100	0.6	500	1.4	5.0	2.0

1. Inductance: Main Transformers 10KHz/100mV. CMC 100KHz/20mV.
2. Leakage Inductance & Interwinding Capacitance: 100KHz/100mV.

**MARKINGS AND DIMENSIONS**

**Part Number:** 49TM - 303 1 XX A NL

A B C D E F

- A:Series
- B:Line Side Inductance
- C:Sequence id
- D:Inductance And DCR
- E:Schematic
- F:RoHS Version

**SCHEMATIC A**

**SCHEMATIC B**


Chip Side Line Side